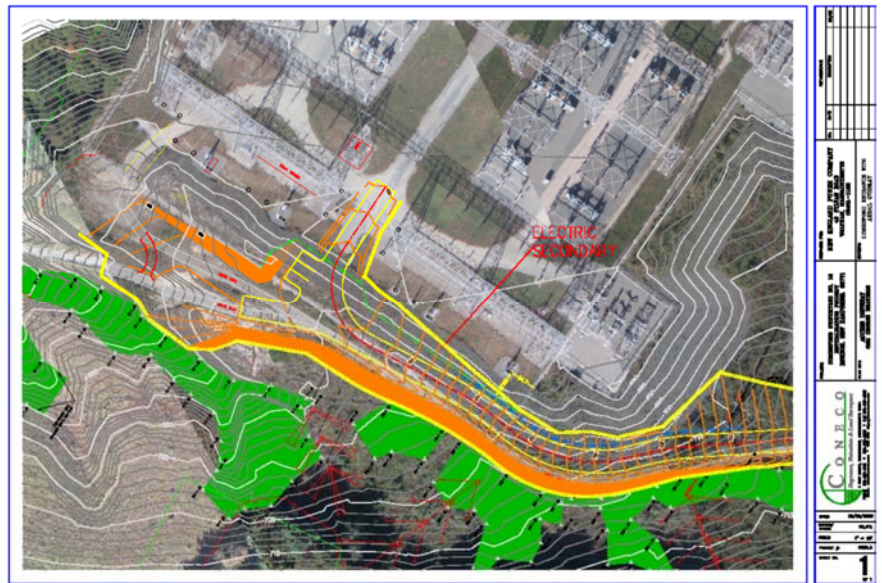


National Grid

Comerford 18 Switchyard Access Driveway

Project Description

Coneco provided preliminary and final engineering services as well as construction support services for the design and construction of a 4,950 foot long driveway connecting the Monroe HVDC and the Comerford 18 Switchyard, thereby providing reliable access for National Grid's short term construction and long term O&M needs. Services included soil explorations and geotechnical report, alternatives analysis, driveway design, hydraulic analysis, stormwater management system design, civil support for permitting of project through the NHDES, cost estimating, bid support and construction inspection. The stormwater management system included a series of vegetated swales with check dams, nine turn-out level spreaders and a wetland connectivity bed, which allowed water from an up-gradient wetland to pass beneath the driveway and connect to the down-gradient wetland. The driveway also included a bridge over Smith Brook. The structural design was performed by an out-



side consulting firm, to which Coneco provided civil support services in the form of a hydraulic analysis of Smith Brook as well as horizontal and vertical roadway alignments, resulting in a fully integrated design.

Contact: Richard Lewis, Principal - Engineering
508-697-3191, extension 126 • rlewis@coneco.com