

**Lesley University  
 Cambridge, MA**

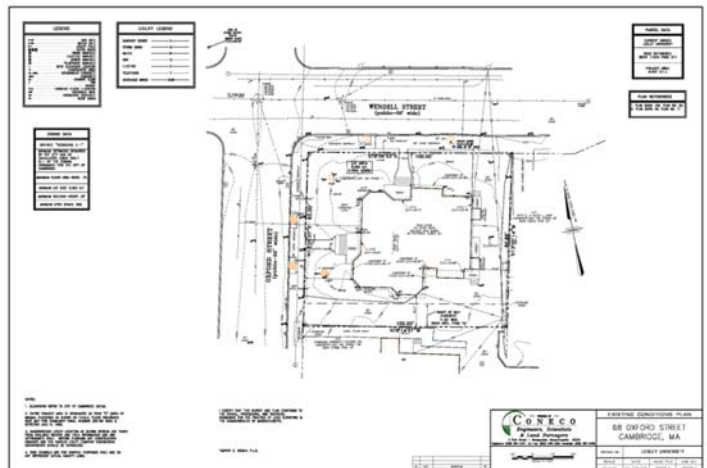
## Existing Conditions Surveys

### Project Description

Since 2001 Coneco has provided survey services to Lesley University, which has an urban campus made up of dozens of parcels throughout the heart of Cambridge. Whether for the construction of a new dormitory or simply an addition to an existing building, we provide the design team with accurate base plans, complete with detailed topography, utility information, and architectural details.

Using state of the art robotic and reflectorless total station technology, Coneco is able to consistently complete existing conditions projects on budget and on time.

We are proud to provide the long term commitment to project management that is helping Lesley University in the continued expansion of its vibrant campus.



**Contact: Timothy S. Bodah, PLS, Principal - Survey  
 (508) 328-8931 (cell) • [tbodah@coneco.com](mailto:tbodah@coneco.com)**