

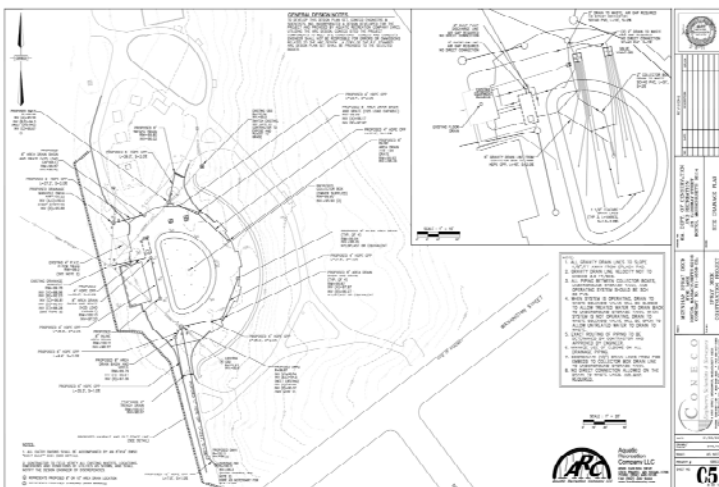
**Massachusetts Department of  
Conservation and Recreation**

## Playground Improvements and Spray Park Design

### Project Description

Coneco has been providing engineering, environmental and survey services to improve visitor experiences at Massachusetts Department of Conservation and Recreation (DCR) parks and playgrounds throughout eastern Massachusetts. At the Moynihan Playground in Hyde Park, Coneco completed an assessment of the environmental conditions of an existing wading pool, directed the demolition of the pool and the remediation of legacy impacted construction materials. Coneco then designed and permitted a new spray park with amenities to replace the demolished wading pool.

The new spray park, which opened to the public for the 2012 summer season, has been a great success, providing a safe and exciting recreational opportunity for families.



**Contact: Kevin McHugh, P.E.**  
**(617) 640-7949 (cell) • kmchugh@coneco.com**